

China-Japan-Korea IMBeR Symposium: Past, present, and future

Ying WU, Fang Zuo

The 8th CJK IMBeR Symposium | 17-19 September 2018, Shanghai, China

The 1st China-Japan-Korea Joint GLOBEC Symposium



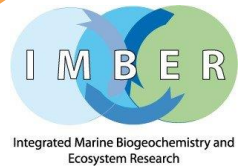
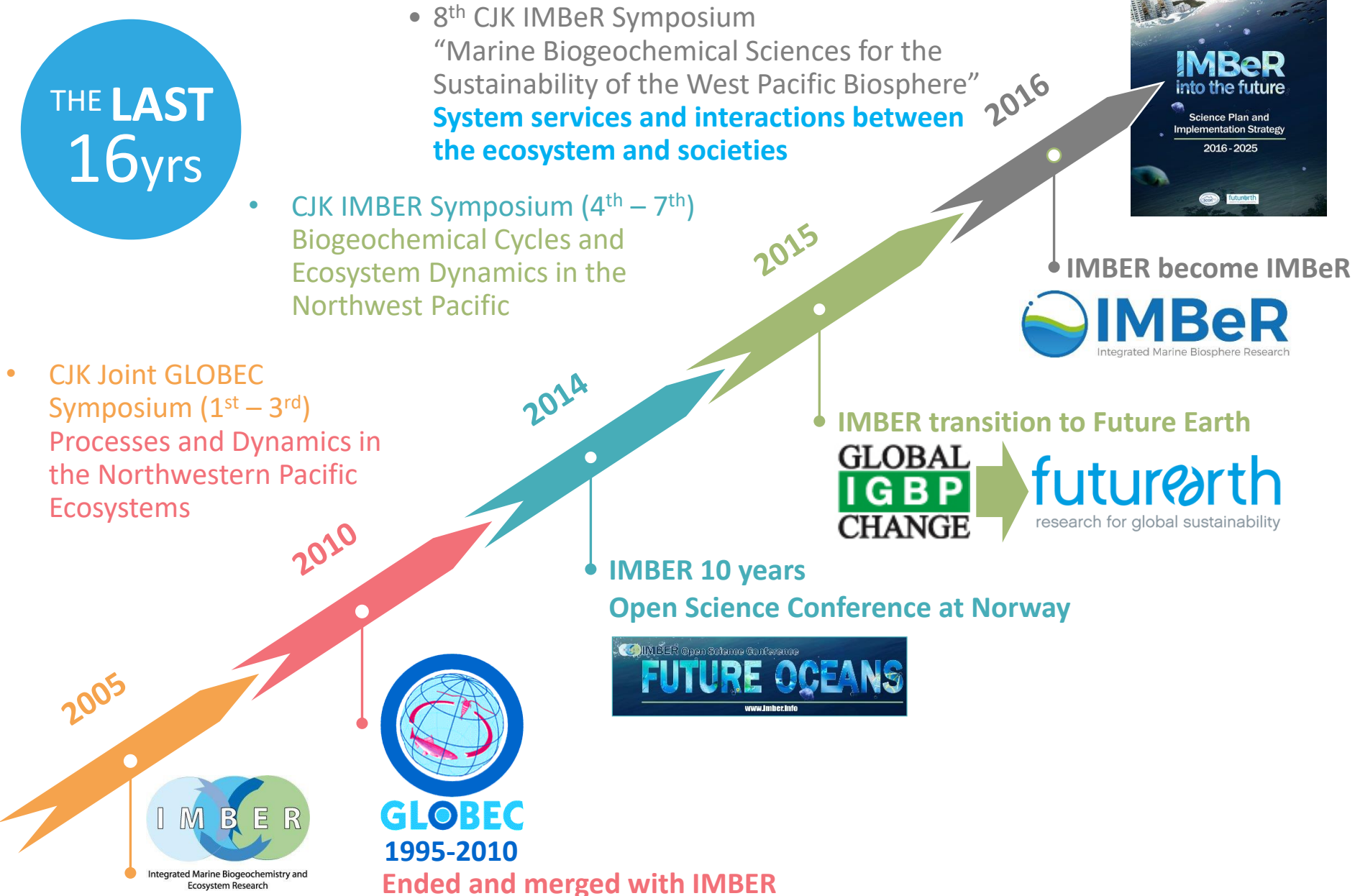
*Professor Im Sang Oh,
Chair of the Korea GLOBEC*



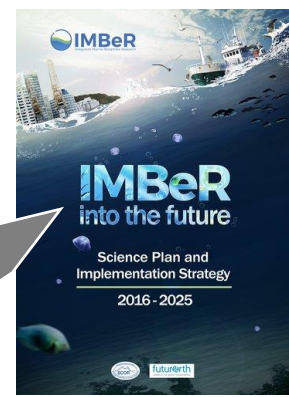
*China-Korea-Japan Joint GLOBEC
Symposium at Ansan, Korea on
December 13-15, 2002*

C-J-K IMBeR Symposium history: 16 years from 2002

THE LAST
16yrs

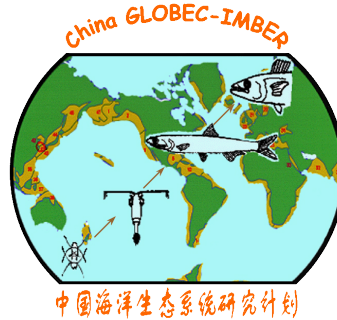
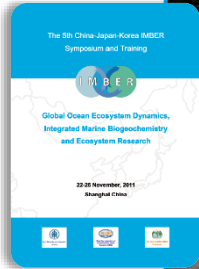


Ended and merged with IMBER



Recent C-J-K symposium & core members

5th: Shanghai, 2011



Jing ZHANG
IMBER SSC
(2007-2009)

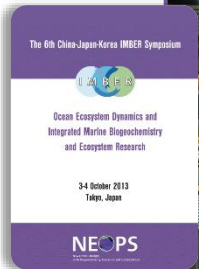


Su Mei LIU
IMBER SSC
(2010-2015)



Ying WU
IMBER SSC
(2016-)

6th: Japan, 2013



Japanese Integrated Marine Biogeochemistry
and Ecosystem Research



Hiroaki SAITO
IMBER SSC
(2007-2008)



Hiroshi OGAWA
IMBER SSC
(2009-2014)



Masao ISHII
IMBER SSC
(2015-2017)

7th: Korea, 2016



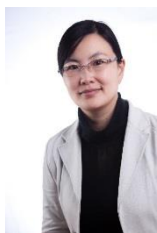
Singae YOO
IMBER SSC
(2009-2014)



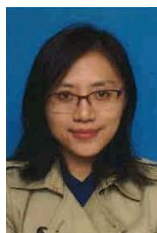
Se-Jong Ju
IMBeR National
Contact for Korea

C-J-K symposium coordination hub: IMBeR Regional Project Office

Developed & maintaining >800 contacts in the Asia-Pacific region



Liuming HU



Yi XU

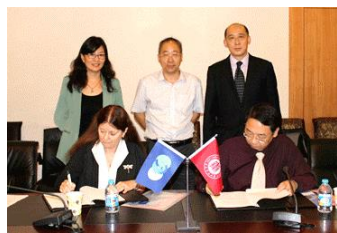


Fang ZUO

3rd MOU between IMBeR and ECNU in 2016

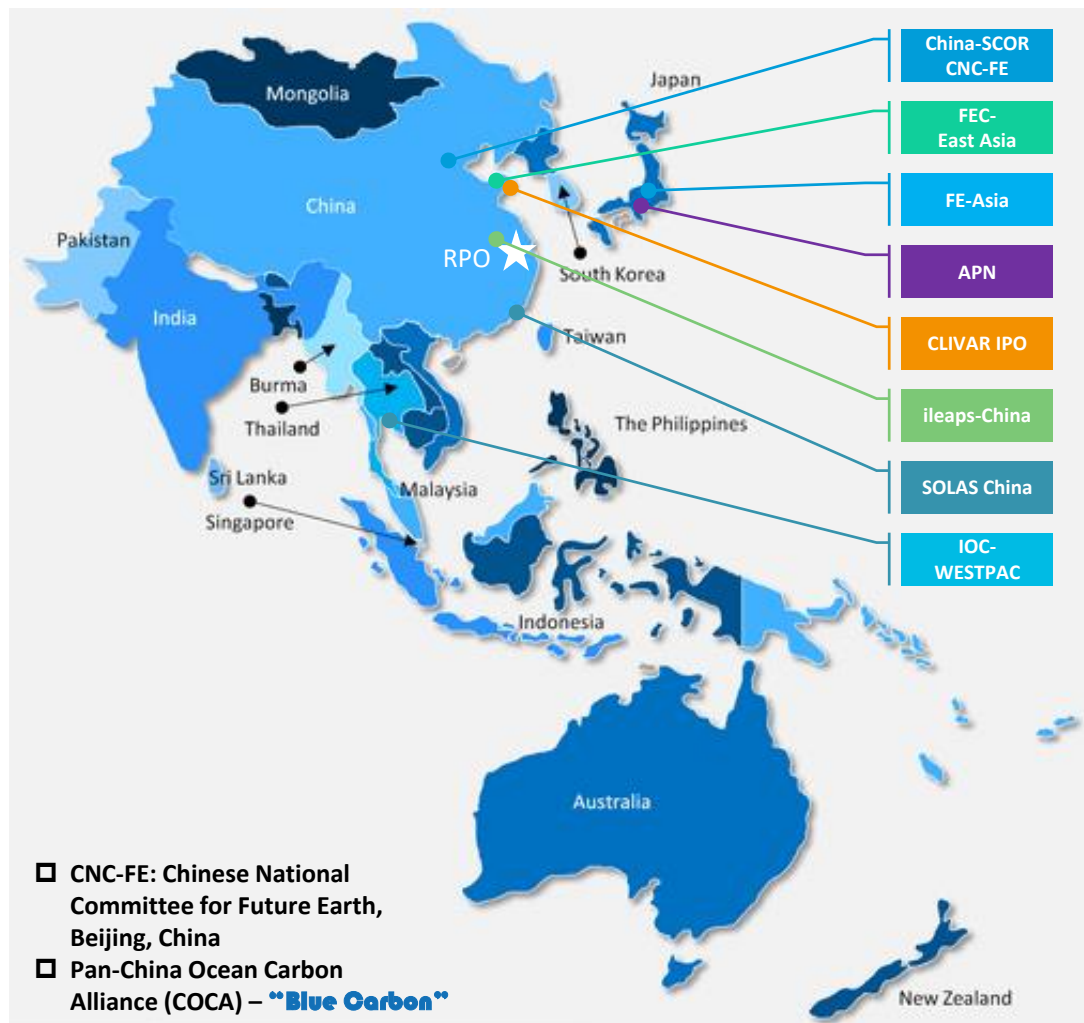


1st MOU in 2010



2nd MOU in 2013

Actively building new connections with scientists from the West Pacific region



Map of IMBeR and its partnerships in the Asia-Pacific region

C-J-K symposium: a platform for IMBeR Endorsed Projects

- Altogether **48** endorsed projects since 2006
- Now **11** ongoing endorsed projects, **5** projects from this region

Acronym	SKED	LEDS	MCS-CNS	PACECS	MEMFiS
Full title	The Study of Kuroshio Ecosystem Dynamics for Sustainable Fisheries	Living-resource & Ecosystem Dynamics on the Slope of the South China Sea	Mechanisms of Marine Carbon Storage and Coupled C, N & S cycles in response to global change	Processes and Approaches of Coastal Ecosystem Carbon Sequestration	Marine Ecosystem Modeling and Forecasting System in the China Seas and Northwestern Pacific
When to IMBeR	2014	2016	2016	2016	2018
Country of affiliation	Japan	China	China	China	China
Time table	2011-2021	2014-2018	2016-2021	2016-2021	2016-2020
Area of study	Kuroshio region (from Taiwan to Japan), western North Pacific	Northern slope of the South China Sea	South China Sea Bohai Sea	Chinese Marginal Seas	Chinese marginal seas and the Northwestern Pacific



Topics

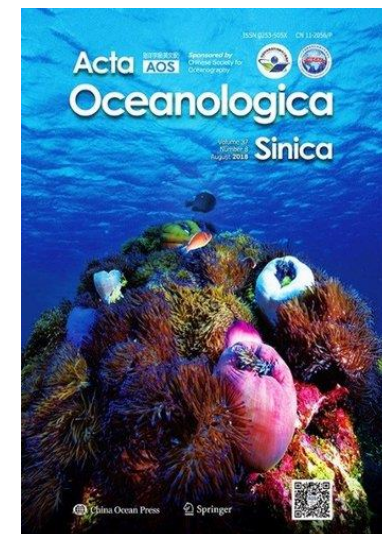
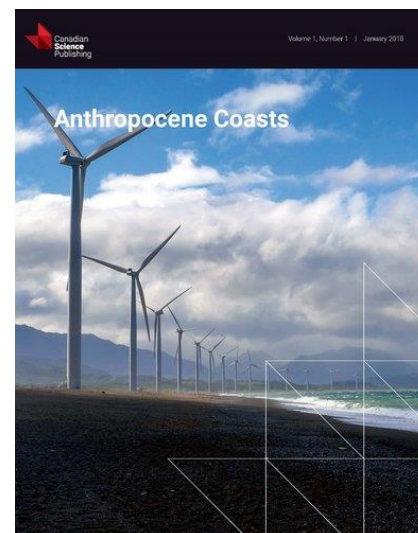
The 8th China-Japan-Korea IMBeR Symposium will focus on analyzing the impact of climate change and anthropogenic forcing on physical processes and biogeochemical cycles, ecosystem structure and functions, and fisheries in the West Pacific region, and how these complex interactions in combination, in turn, influences marine ecosystem and human society in a broad aspect.

Agenda and Social Events

Day 1 - Monday	Day 2 - Tuesday	Day 3 - Wednesday
Session 1: Advances in observation and modelling of physical and biogeochemical processes in the West Pacific region	Session 2: The response of marine ecosystems to natural and anthropogenic forcing: past, present and future	Session 3: Responses of Society to global change in marine system: ways forward
17:00 Poster Session <i>(Snacks and Drinks)</i> “Best Poster Awards”	19:00 CJK IMBeR Dinner <i>(Buffet at the bund)</i> Bus leave at 17:30	14:00 IMBeR Human Dimensions Training Course

Special issues & meet the editors

We are proud to announce that outstanding papers will be invited to be submitted to special issues organized by international journals, with fast track selection.



IMBeR Human Dimensions Training Course

A half-day training programme will be organised on 19 September 2018. This aimed to provide early career scientists and students with information on the latest progress in IMBeR related research on the interactions between human and ocean systems.



Contribute to IMBER ADaPT decision support tool for global change responses

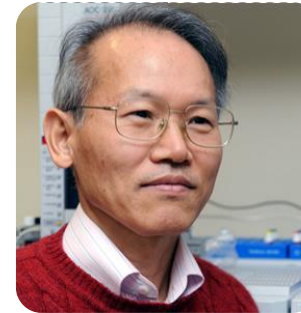
We need case studies dealing with marine fisheries and aquaculture issues!



Yinji LI



Mitsutaku MAKINO



Gi Hoon HONG



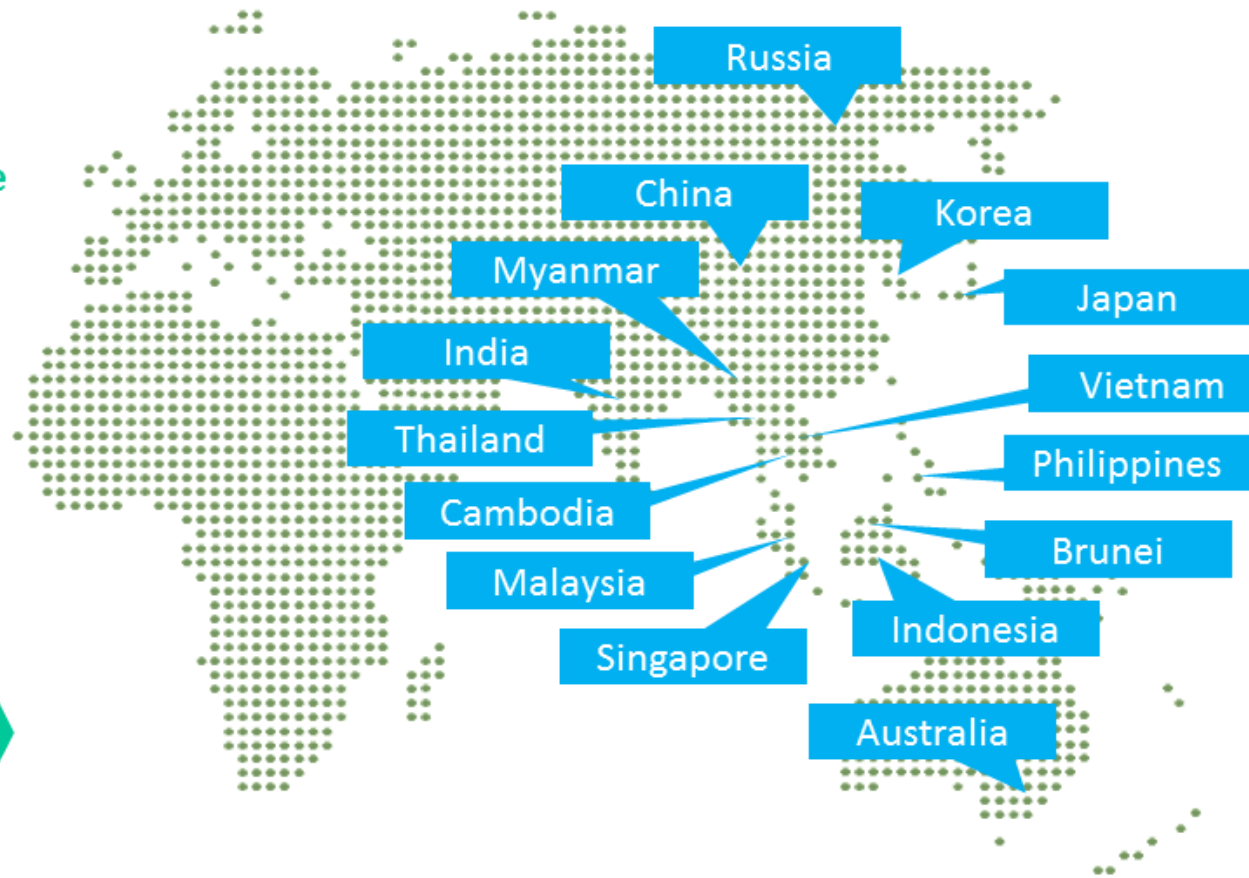
Ling CAO

Continental Margins Working Group Workshop 2018

State Key Laboratory of Estuarine and Coastal Research
East China Normal University, Shanghai, China, 20-21 September 2018

FURTHER COOPERATION ALONG THE MARITIME SILK ROAD

The Scientific Program Committee invite all the experts, young scientists and students from the West Pacific region to the forum.



Welcome to Thailand in 2020

1st IMBeR West Pacific Symposium



Suvaluck Satumanatpan
 IMBeR SSC Member since 2018
*Marine and Coastal management
 and fisheries governance*
 Mahidol University



United Nations
 Educational, Scientific and
 Cultural Organization



Intergovernmental
 Oceanographic
 Commission

IOC Sub-Commission
 for the Western Pacific
 (WESTPAC)



Thamasak Yeemin
Marine Biodiversity
 Ramkhamhaeng University
 Marine Science Association of Thailand (MSAT)
 International Society for Reef Studies (ISRS)



ASIA-PACIFIC NETWORK FOR
 GLOBAL CHANGE RESEARCH



Penjai Somphongchaiyakul
Marine geochemical cycling and Marine Pollution
 Chulalongkorn University
 Southeast Asia START Regional Center

futureearth coasts
 land-ocean interactions in the coastal zone



Mahidol University
 Wisdom of the Land





*Thank You
&
Enjoy your stay!*